



YUGENING

what if architecture

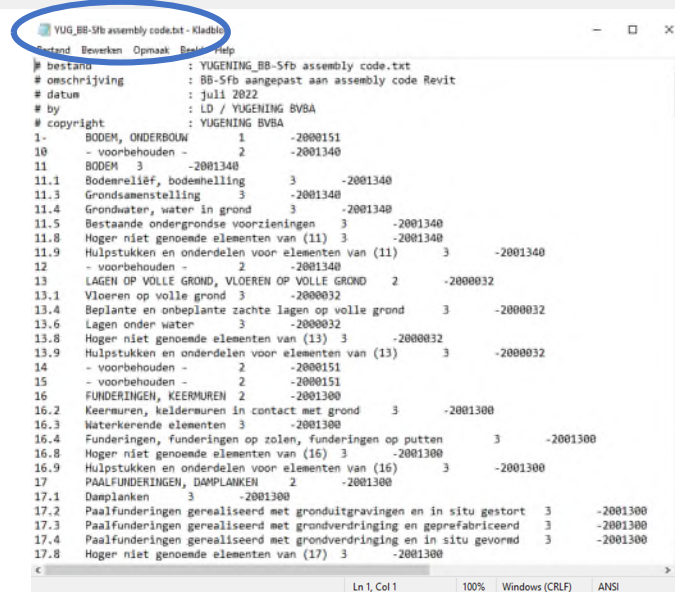
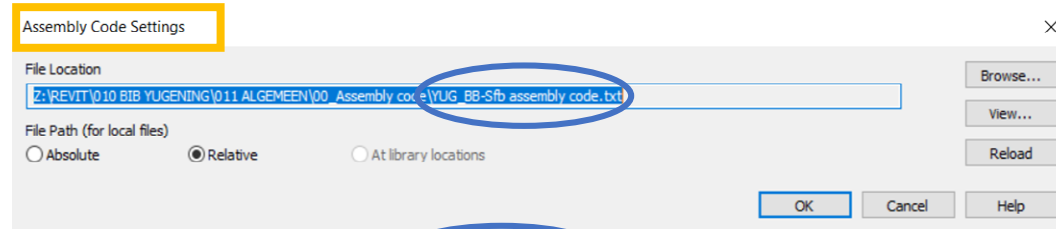
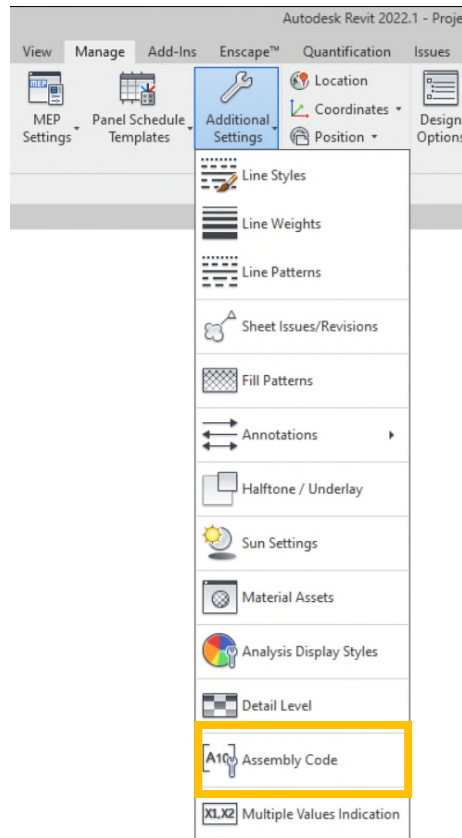


® MADASTER

STAPPENPLAN naar MADASTER platform.

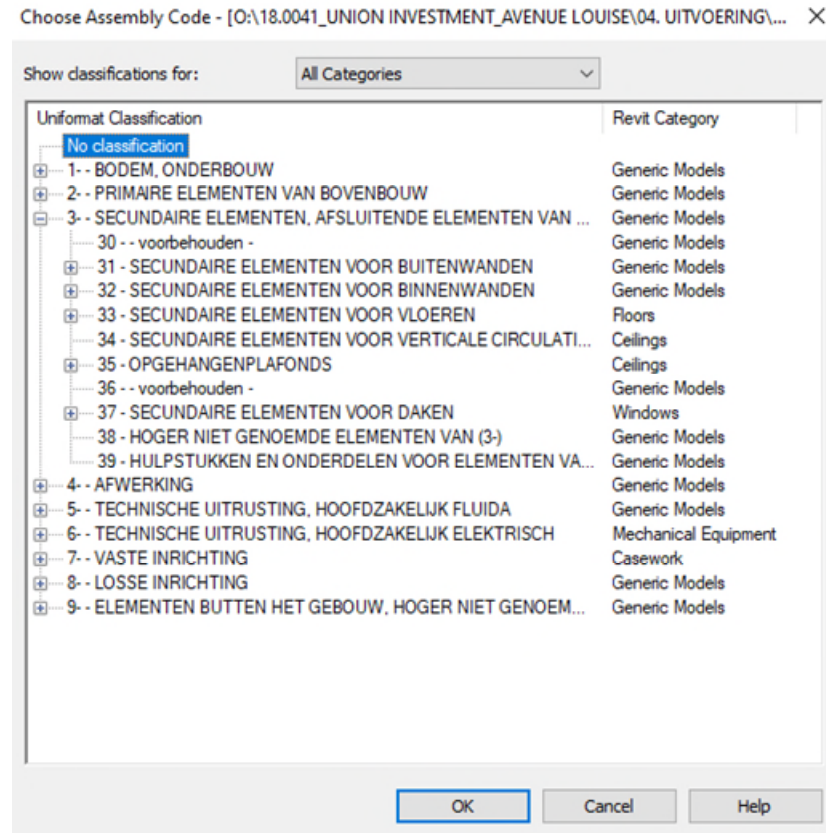
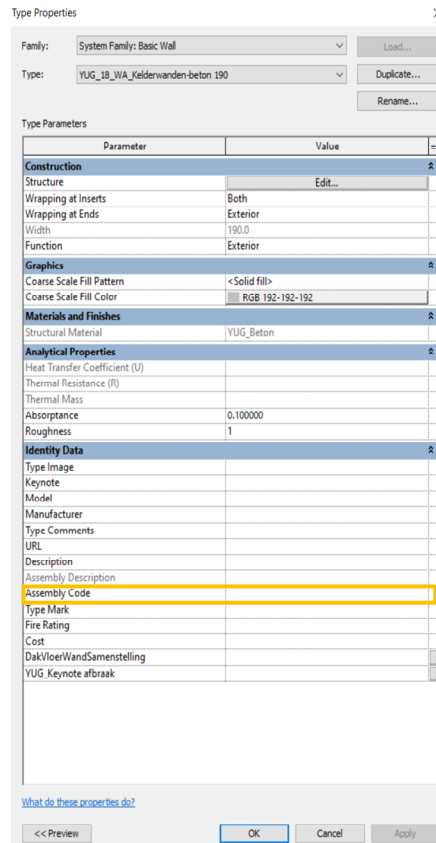
STAP 1 : koppeling BB/SfB codering

Koppel de BB/SfB tabel (=*.txt bestand) met de Assembly Code in de “Additional Settings” – “Assembly Code Settings”.



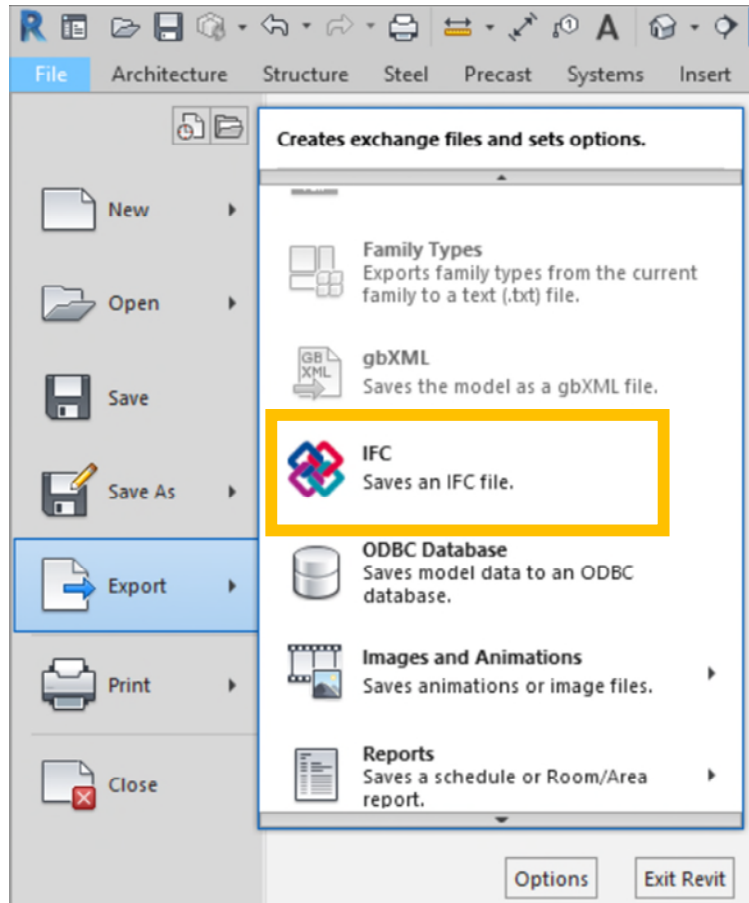
STAP 2 : invullen Assembly code

Bij de gebruikte elementen de correcte BB/SfB code toekennen in de type properties bij “Assembly Code”.



STAP 4 : export IFC

Export naar IFC



REVIT

VOORBEREIDING IN HET MODEL

Gebruik volgende IFC instellingen

The image displays four screenshots of the Revit IFC Export Setup dialog boxes, arranged in a 2x2 grid. Each dialog box is titled 'Modify Setup' and has tabs for 'General', 'Additional Content', 'Property Sets', 'Level of Detail', and 'Advanced'.

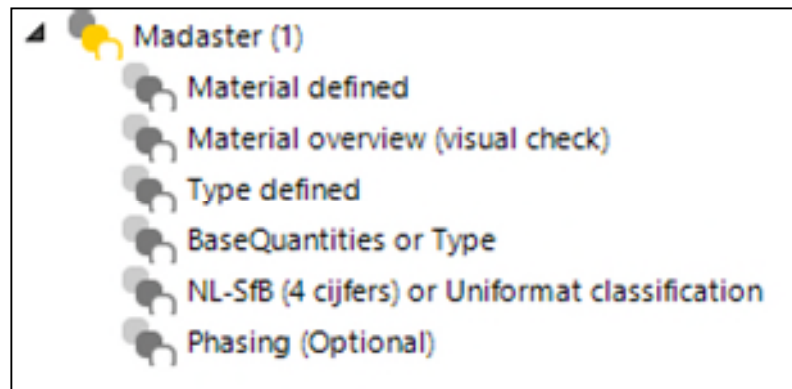
- Top-Left Screenshot:** Shows the 'General' tab. The 'IFC version' is set to 'IFC 2x3 Coordination View 2.0'. The 'File type' is 'IFC'. The 'Phase to export' is 'Default phase to export'. The 'Space boundaries' are set to '1st Level'. The 'Coordinate Base' is 'Shared Coordinates'. The 'Projected Coordinate System Reference' section includes fields for Name, Description, EPSG Code, and Geodetic Datum. There are checkboxes for 'Split Walls, Columns, Ducts by Level' and 'Include Steel Elements'.
- Top-Right Screenshot:** Shows the 'General' tab. The 'Export only elements visible in view' checkbox is checked. There are also checkboxes for 'Export 2D plan view elements', 'Export linked files as separate IFCs', and 'Export rooms, areas and spaces in 3D views'.
- Bottom-Left Screenshot:** Shows the 'Level of Detail' tab. The 'Level of detail for some element geometry' is set to 'Low'.
- Bottom-Right Screenshot:** Shows the 'Advanced' tab. It contains several checkboxes: 'Export parts as building elements', 'Allow use of mixed "Solid Model" representation', 'Use active view when creating geometry', 'Use family and type name for reference', 'Use 2D room boundaries for room volume', 'Include IFC SITE elevation in the site local placement origin', 'Store the IFC GUID in an element parameter after export', 'Export bounding box', 'Keep Tessellated Geometry as Triangulation', 'Use Type name only for IFCType name', and 'Use visible Revit name as the IFCEntity name'.

STAP 5 : controle

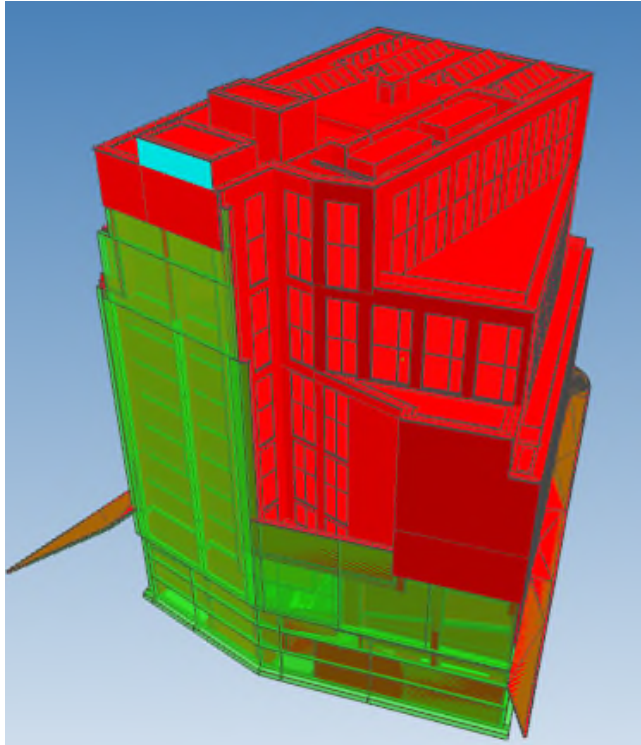
Open de gemaakte IFC in BIMcollab Zoom.

Dankzij de aangeleverde smartviews van Madaster kan men een snelle visuele controle uitvoeren op de toekenning van de materialen, types, BB/SfB codering en fasering.

Let wel : uiteraard controleren Smartviews of de informatie 'kan' uitgelezen worden en toegekend is – niet of de uitgelezen info correct is.



Voorbeeld controle met Smartview BB/SfB codering :



Rode elementen hebben nog geen 4 cijferige BB/SfB code in de Assembly code van het element.

-> Aanpassen in revitmodel en nieuwe ifc export.

BIMcollab Zoom

CONTROLE VAN DE IFC

Alles groen :
Model klaar om opgeladen te worden op het Madasterplatform.

