



BIM praktijkdag

KULab Brugge

Ingenieursbureau Norbert Provoost – Alexander Willems

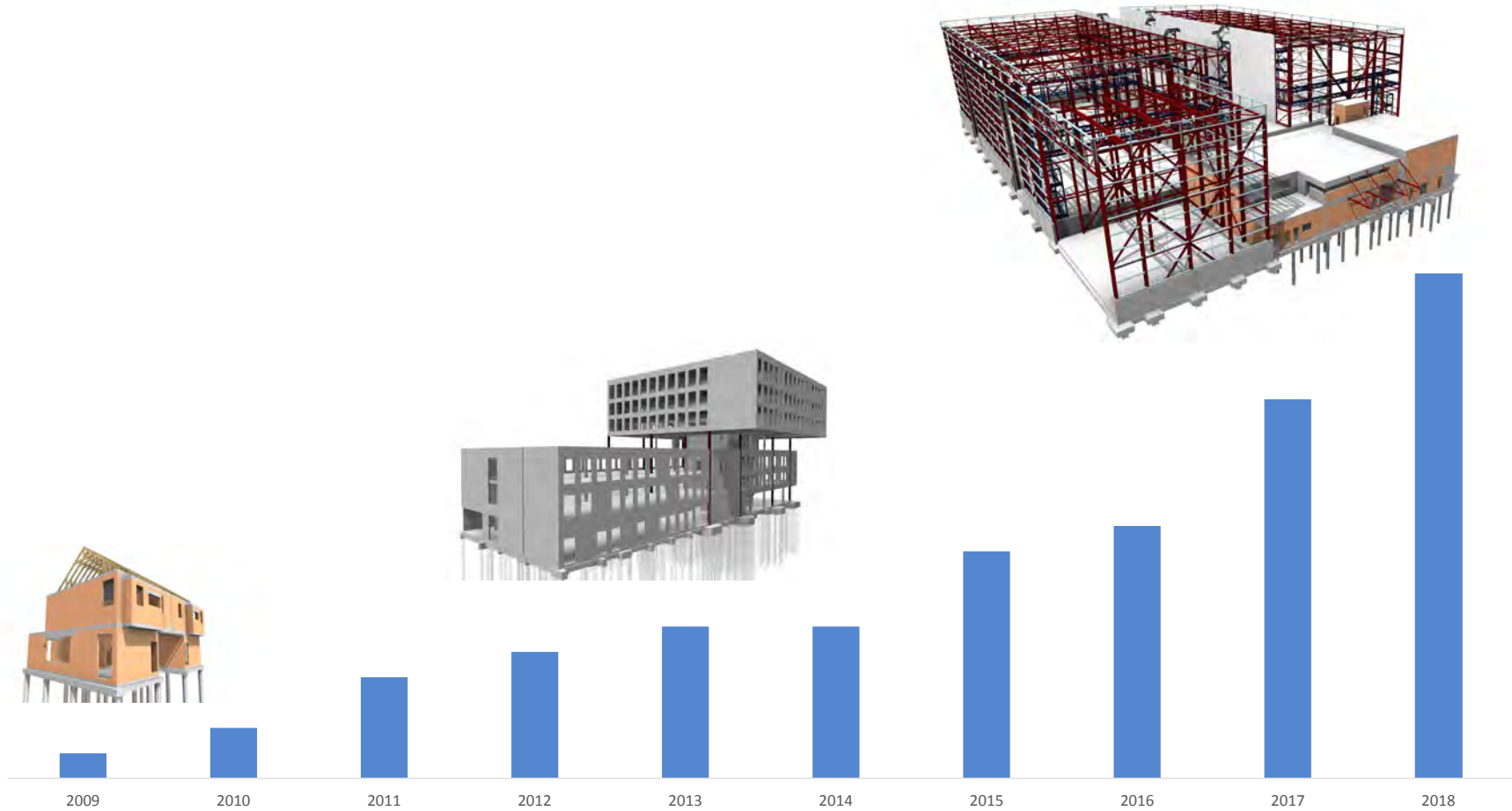


1960
Sint-Amandsberg
> 20 medewerkers
Portfolio > 8500
referenties





TO BIM or NOT TO BIM

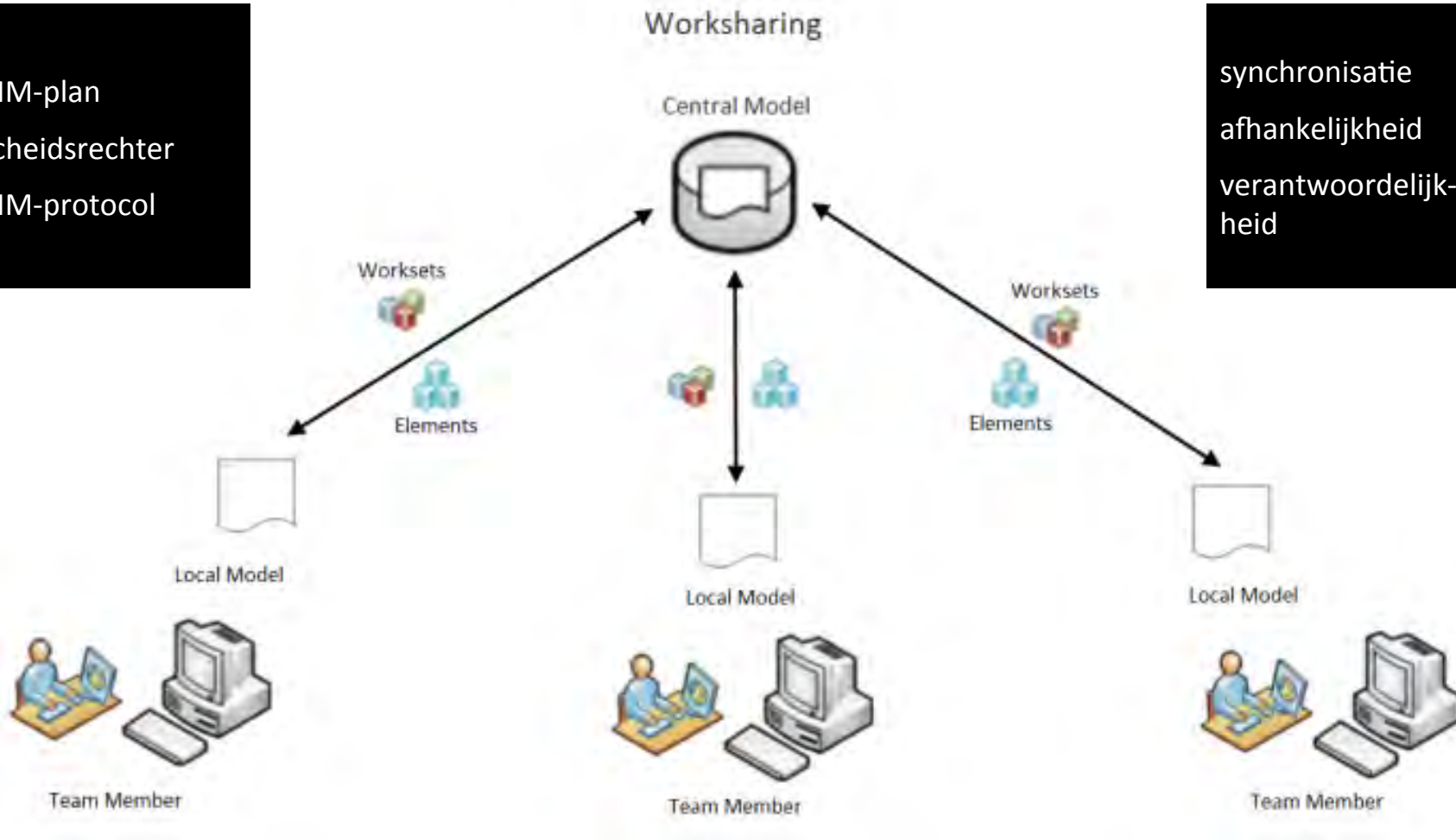




SHARED / LINKED MODEL

BIM-plan
scheidsrechter
BIM-protocol

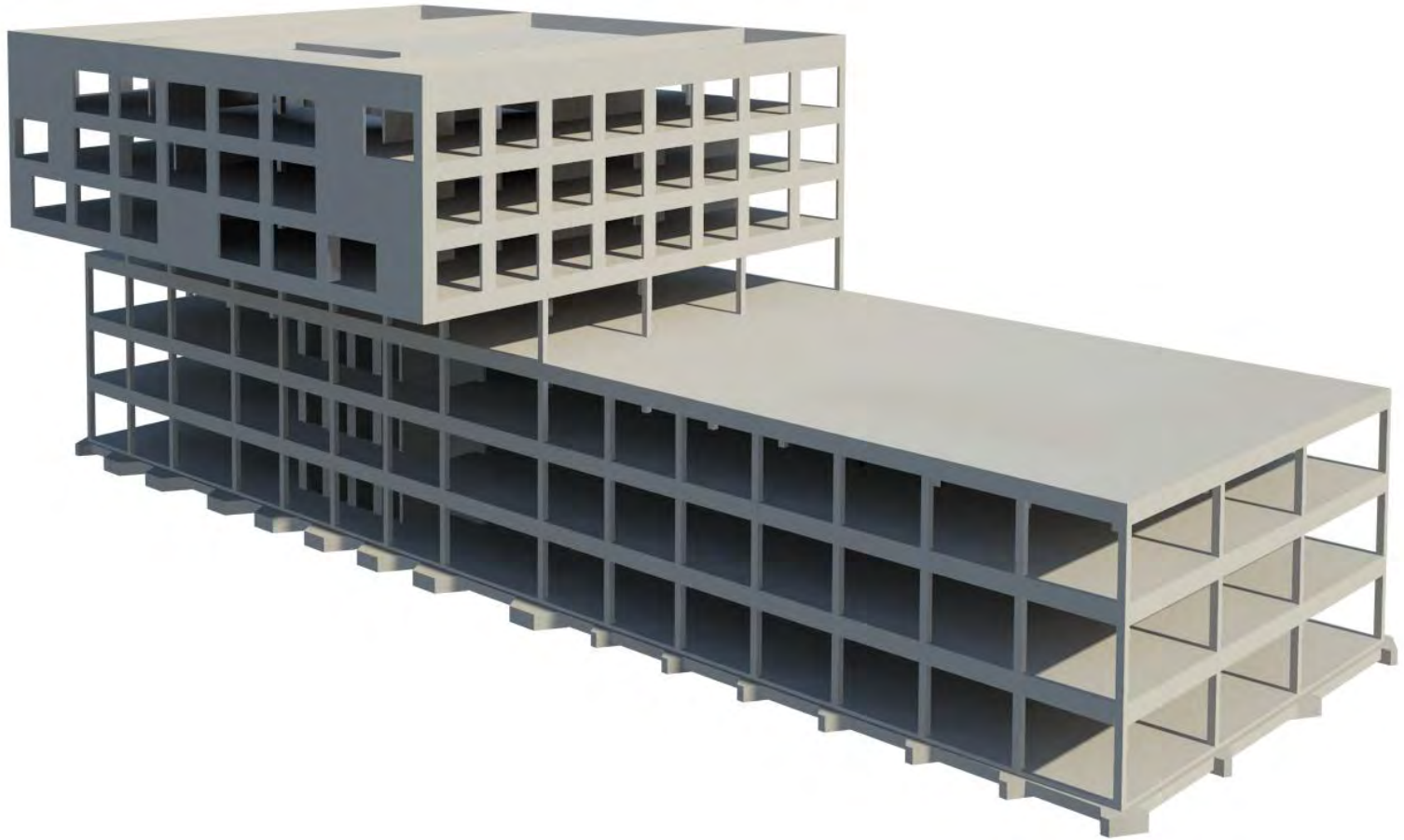
synchronisatie
afhankelijkheid
verantwoordelijkheid





ONTWERP STABILITEIT

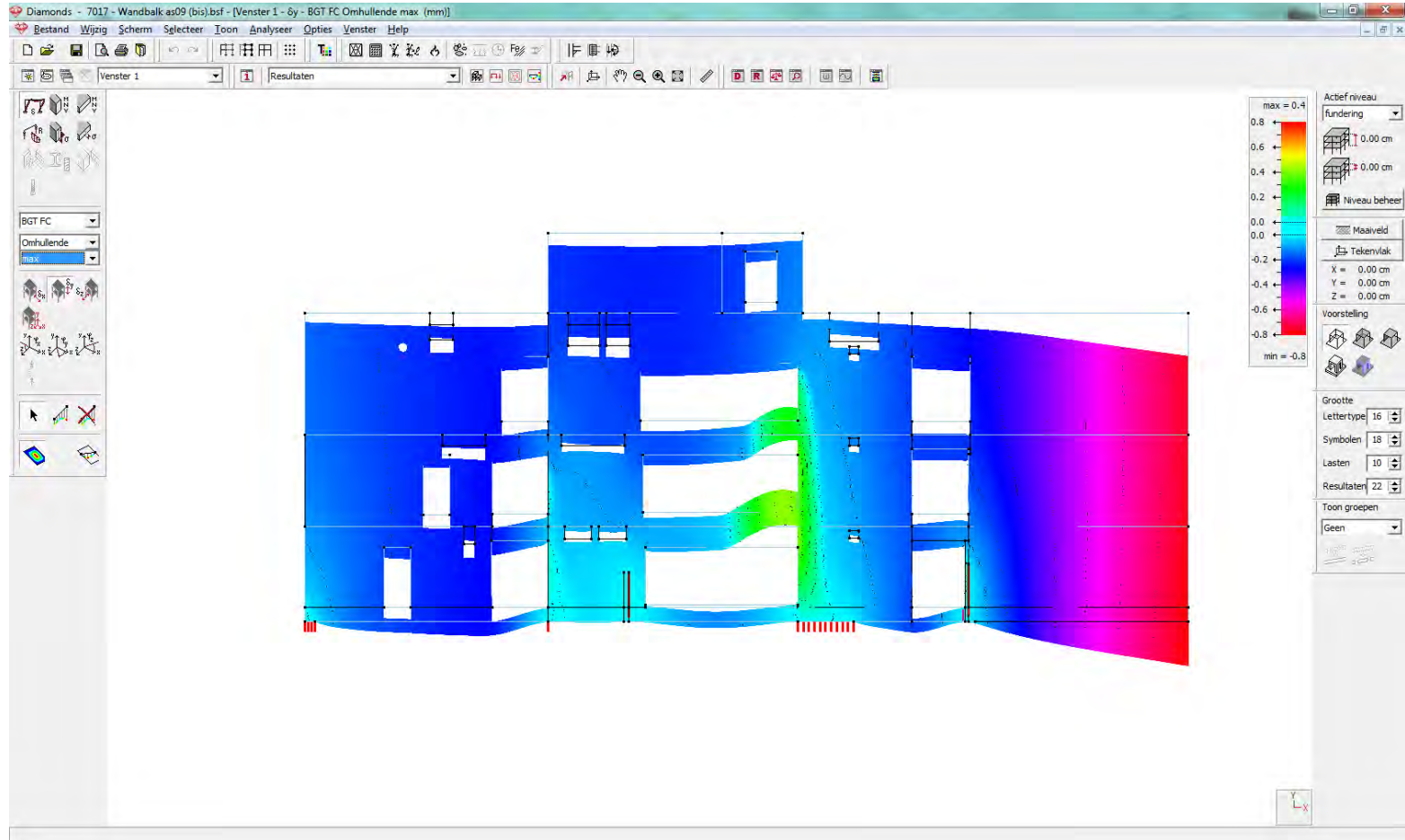
WEDSTRIJD





ONTWERP STABILITEIT

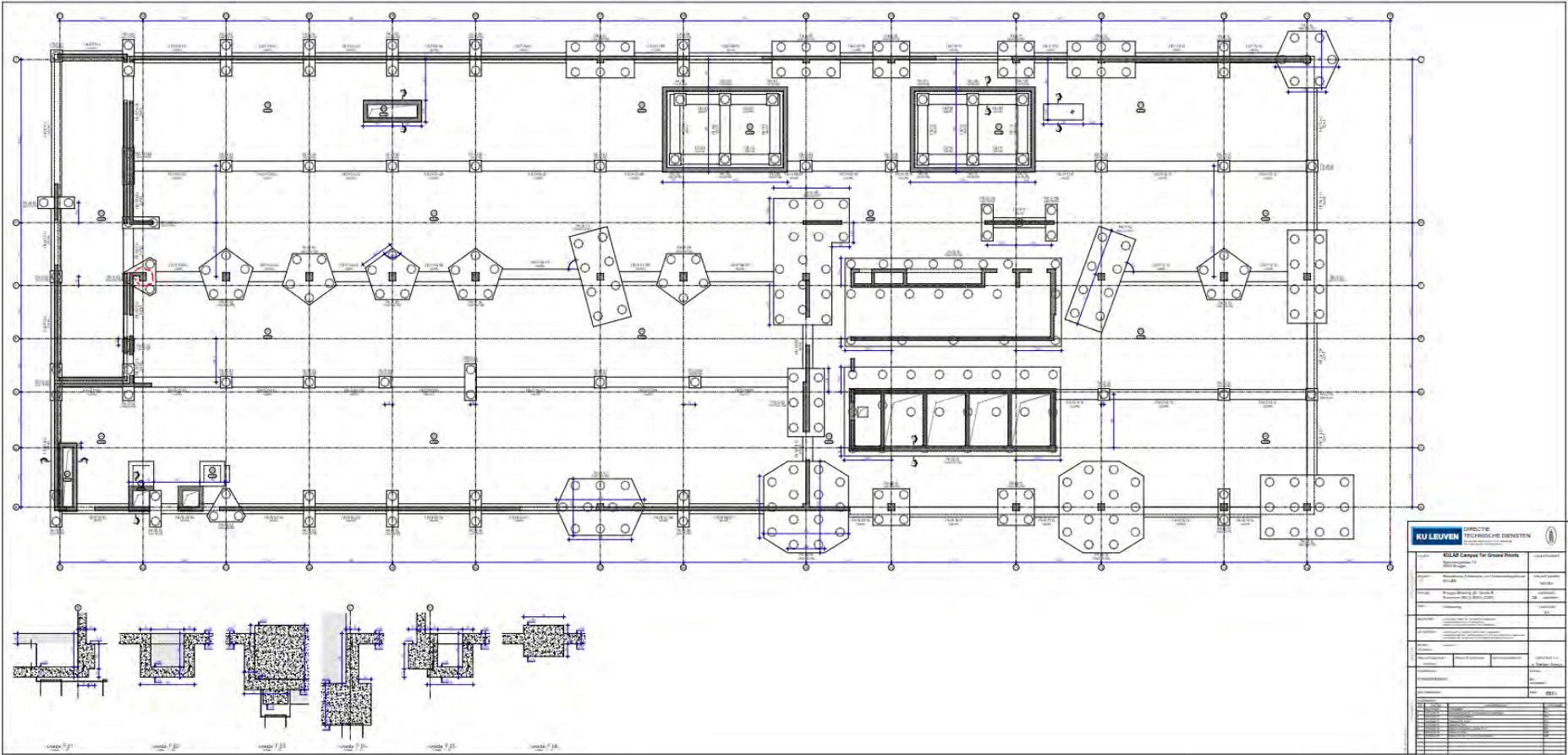
ONTWERP





ONTWERP STABILITEIT

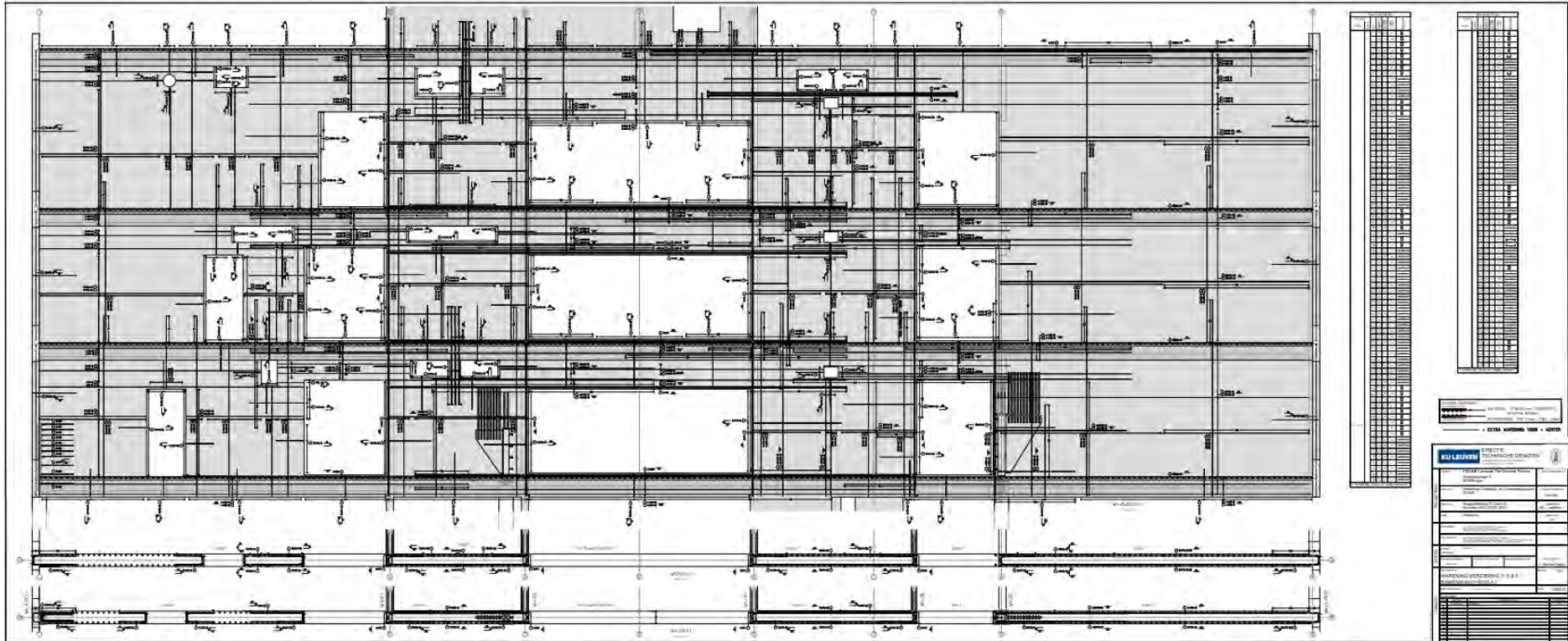
ONTWERP





ONTWERP STABILITEIT

UITVOERING





ONTWERP STABILITEIT

MEETSTAAT

The screenshot displays the Autodesk Revit 2016 interface in 3D Isometric view. The main window shows a 3D model of a building with a red wall section highlighted. Two dialog boxes are open:

- Type Properties:** Shows the family 'System Family: Basic Wall' and the type '126_PRO_WA_GBE-35'. The 'Type Parameters' table is as follows:

Parameter	Value
Construction	
Structure	Edit...
Wrapping at Inserts	Do not wrap
Wrapping at Ends	None
Width	350.0
Function	Exterior
Graphics	
Coarse Scale Fill Pattern	
Coarse Scale Fill Color	Black
Materials and Finishes	
Structural Material	Beton - TPG - Algemeen
Analytical Properties	
Heat Transfer Coefficient (U)	
Thermal Resistance (R)	
Thermal mass	
Absorptance	0.100000
Roughness	1
Identity Data	
Type Image	
Keynote	26.21.10
Model	
Manufacturer	
Type Comments	35cm
URL	
Description	
Assembly Description	
Assembly Code	(28.2)
Type Mark	
Fire Rating	
Cost	
meetcode	
RME Code (C-L-M)	
Other	
RME Length	
RME tvoe mark	

- Keynotes:** A list of keynotes is shown, with '26.21.10' selected. The corresponding keynote text is 'ter plaatse gestorte elementen - wanden/traditionele bekisting'.



ONTWERP STABILITEIT

MEETSTAAT

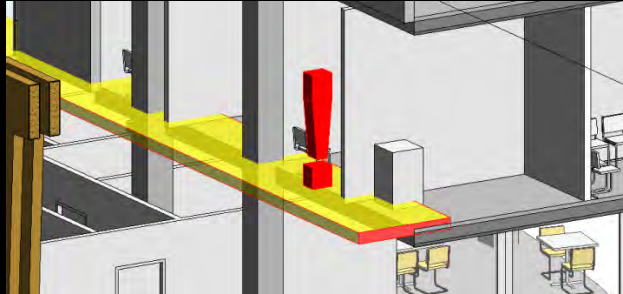
The screenshot displays the Autodesk Revit 2016 interface. The main window shows a schedule titled '<26_PROQ_WA_MST - Wanden>'. The schedule has four columns: A (Number), B (Lengte), C (Hoogte), and D (Volume). The first row is highlighted with a red circle, showing '26.21.10.' in column A. A red arrow points from this row to a central window titled '26_PROQ_WA_MST - Wanden.txt - Kladblok', which contains a text-based representation of the schedule data. A second red arrow points from the text editor to a right-hand window showing an Excel spreadsheet. The spreadsheet has the same four columns (A, B, C, D) and contains the data from the Revit schedule, with the first row also highlighted in red.

A	B	C	D
26.21.10.			
W0/12	10.73	2.45	2.630
W-1/23	3.53	0.47	0.165
			2.795
15 cm			
W0/15	0.78	4.08	0.477
W1/06	10.30	1.44	2.222
W1/15	0.78	3.56	0.416
W2/06	10.20	1.79	2.737
W2/15	0.78	3.89	0.455
W3/06	10.30	1.83	2.824
W3/14	0.88	4.30	0.568
W3/15	0.88	3.28	0.434
W4/06	14.90	1.85	4.129
W4/14	0.88	3.75	0.495
W4/15	0.88	3.75	0.495
W5/06	14.80	1.86	4.129
W5/14	0.88	3.75	0.495
W5/15	0.88	3.75	0.495
W6/06	14.80	2.41	5.352
W6/14	0.88	4.21	0.555
W6/15	0.88	4.21	0.555
			26.833
20 cm			
W0/01.B.D	7.44	4.55	6.773
W0/01.D.I	19.53	2.64	10.303
W0/01a	2.30	4.61	2.120
W0/01b	4.15	4.45	3.692
W0/02	12.00	3.35	8.041
W0/02.D.Ia	19.66	3.33	13.097
W0/02.D.Ib	19.43	3.34	12.999
W0/03	12.00	4.74	11.369
W0/04	12.00	4.59	11.026
W0/05	12.15	2.39	5.817
W0/08	3.35	4.40	2.948
W0/09	3.35	4.40	2.948
W0/10	3.35	4.40	2.948
W0/11	3.35	4.40	2.948
W0/12	10.53	3.79	7.978
W0/13	12.00	2.41	5.784
W0/14	10.83	2.78	5.906
W0/16	0.78	4.08	0.477
W0/17	0.88	3.62	0.636
W0/18	0.98	3.83	0.750
W0/19a	4.34	3.20	2.779
W0/19c	6.11	3.49	4.264
W0/20	0.90	4.16	0.746
W0/21	1.30	4.21	1.095
W0/21.07	32.52	2.95	19.160
W0/21.09	11.98	4.66	11.209
W0/21.10	2.43	3.96	1.921
W0/21.02a	5.75	4.76	5.471
W0/21.02b	4.27	4.67	3.987
W0/21.02c	4.17	4.78	3.987
W0/21.02.07	28.00	3.16	17.671



COÖRDINATIE

- *Interne ontwerpvergaderingen: 14-daagse ontwerpvergadering*
- *Communicatielijsten*



TIJDSBESTEDING / STUDIEKOSTEN



- *geen tijdsvoordeel*
- *meer tijd nodig tijdens ontwerpfase (15%)*
- *wel kwaliteitsvollere plannen (foutenlast lager)*

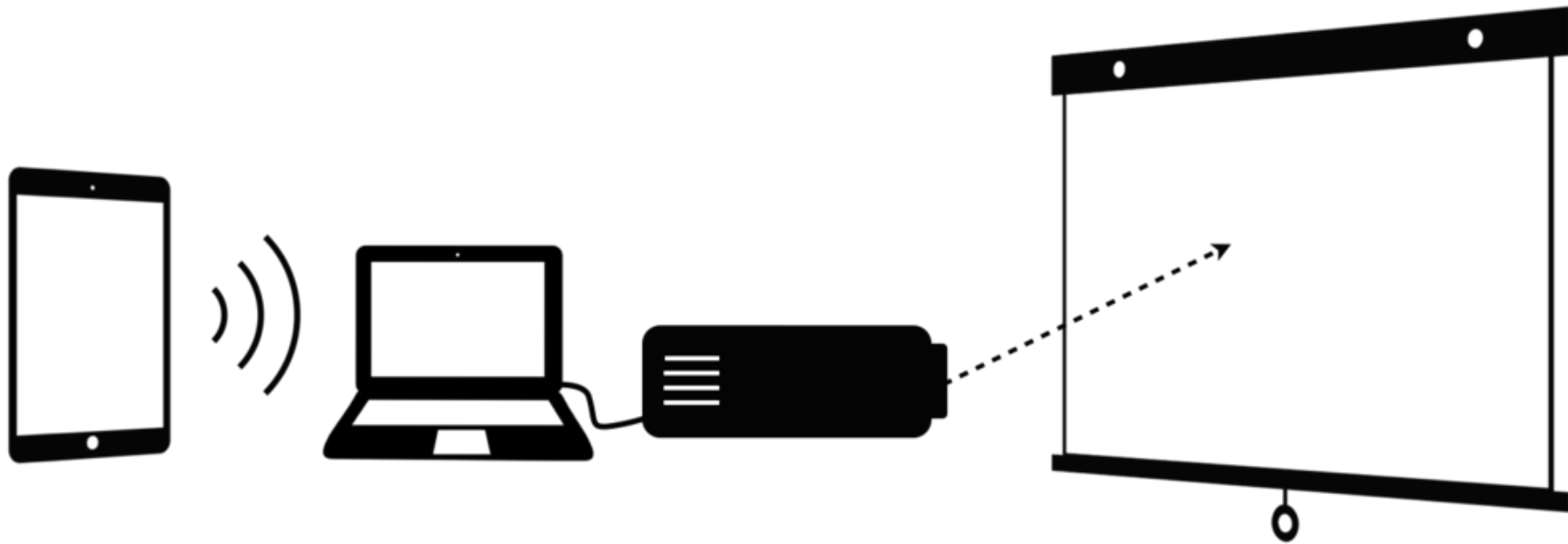


- *studiekosten liggen hoger tijdens ontwerpfase*
- *rendement wordt gemaakt tijdens fase uitvoering (opmaak wapeningsplannen)*



WERF

“Een witte wand en Wifi in de werfkeet, meer hebben we niet nodig.”



BEDANKT ...



Ingenieursbureau Norbert Provoost bvba

Alfons Braeckmanlaan 233

9040 Sint-Amandsberg

T 09 210 55 20

M info@norbertprovoost.be

W www.norbertprovoost.be

