



Enabling
Digital
Construction



ThorbiQ

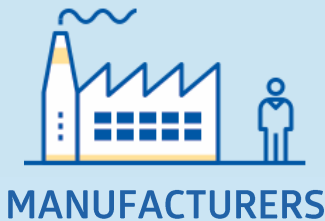
A Construction Industry Platform
as a trusted source of information
for construction actors



Our mission

ThorbiQ is a **Construction Industry Platform** offering the construction industry a trusted source of consistent data, content, applications and services.

Our mission? **Enabling Digital Construction** by helping all stakeholders in the construction industry digitally collaborate and excel in Construction 4.0



— mission —



Our history



MANUFACTURERS



CONTENT
CREATION
THORBIQ
PLATFORM
AS A SERVICE
ALIGNED
MANUFACTURERS
(Jaga, Grada, Daikin)



OPEN SOURCE
COMMUNITY
(TECHBIM)
PRODUCT PARTLY
OPEN SOURCE (RSF)
COMMERCIALISED
PRODUCT FOR CLOSED
USER COMMUNITY
PIONEERING
USER OF BIM FOR
MEP



USERS

10 years of history leading up to this point

- 2009: technical design office Witas starting with Revit MEP
- 2011: Witas Localiser for Revit MEP V1 on the market
 - 2014: Witas Software & Services
 - 2016: ThorbiQ is spin-off from Witas



Trends in the Construction Industry

“Construction 4.0 is here and BIM is the heart of the digital transformation within the construction industry.”

- **“Construction 4.0”** – Digital construction is changing the way buildings are being designed, built, maintained & operated.
- **“Building Information Modelling (BIM)”** – BIM is the foundation of the digital transformation in the construction industry and is becoming the global method of collection, sharing and maintaining construction asset data.
- **“Digital Twin”** – BIM is a building process involving the creation & maintenance of a digital BIM model, representing a digital twin of the building. BIM is becoming increasingly mandated by national governments.
- **“Digital Service”** – more and more, manufacturers of building products are gearing up for digital transformation by offering reliable digital (BIM) services to the construction actors (architects, engineers, installers, facility managers, ...)





What is BIM?

- **A building process** involving the creation & the maintenance of a digital twin or **Building Information Model** (“BIM model”) of a building
- Allowing **collaboration** between all building actors throughout the **complete building lifecycle**

*“BIM is the future of the construction industry,
where reliable information is key!”*

A digital twin of a building without reliable data is worthless.”

[demo movie](#)



— BIM —



What's the problem?

“There's a huge gap between the manufacturers and the construction actors, with an inefficient building process as a consequence.”

manufacturers

of building products struggle with providing their products digitally to the construction actors



MANUFACTURERS

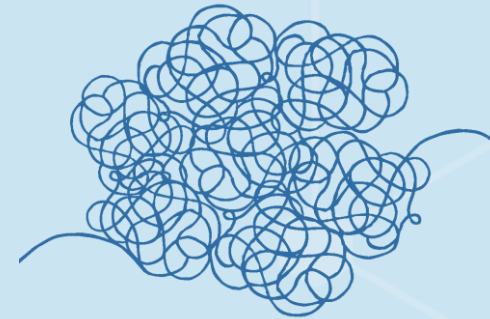


insufficient productivity & efficiency of construction actors - **users** - by losing a lot of time & money not finding what they need



USERS

architects, engineers, contractors, installers, facility managers, ...



building owners

suffer tremendously from building projects typically going over time & budget



BUILDING OWNERS

Reliable data is missing!

— problem —



Reliable data from manufacturers is key



Reliable data from manufacturers is key to have BIM working

- Without manufacturer specific data, a BIM model is worthless
- The digital (BIM) gap between manufacturers and construction actors needs to be closed by offering reliable data easily available to construction actors.





The ThorbiQ solution

helping **manufacturers** of building products to deliver an effortless digital service to the construction actors



MANUFACTURERS



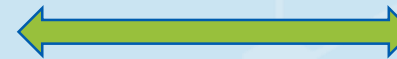
bridging the gap between the manufacturing and the construction industry



USERS

architects, engineers, contractors, installers, facility managers, ...

providing construction actors – our **users** - a trusted source of information, easy to use, saving them a lot of time & money



facilitating a better interaction between construction actors and their customers



BUILDING OWNERS

helping **building owners** to decrease the total cost of ownership (“TCO”) of the complete building’s life cycle

— problem —



The ThorbiQ solution – manufacturer specific BIM Suites

Cloud based BIM Suites

- Containing product selectors, configuration options, etc.
- Available in multiple languages
- Guiding construction actors to the right products
- Allowing to download always up-to-date data and content
- Supporting dynamic BIM content
 - Multiple LOD
 - Generic & manufacturer specific
- Integrating with BIM platforms
 - Allowing a live link between the BIM model & the manufacturer's data






Use case Jaga BIM Suite

NEWS ▼ INTERNATIONAL +32 (0)11 29 41 12

jaga PRODUCTS ▼ TECHNOLOGY ▼ PROJECTS **DOWNLOADS** ▼ WHO ARE WE? ▼ CONTACT ▼

Downloads / BIM




Jaga BIM Application Suite

Together with ThorbiQ, a professional partner with years of HVAC experience, we set up our own Jaga BIM platform with the aim of providing maximum support to our customers throughout the construction process.

The Jaga BIM platform contains some top products that are fully prepared for a very energy efficient future.

[DISCOVER THE JAGA BIM PLATFORM](#)

JAGA N.V. - Verbindingslaan 16 - B 3590 Diepenbeek - Belgium - VAT BE 0413.382.425 - IBAN BE16 4592 5030 0174
Copyright © 2019 All rights reserved.





Use case Jaga BIM Suite

Doelstelling?

Globale uitrol digitale (BIM) dienstverlening

- Altijd up-to-date door de 'data to BIM' aanpak
- Een Jaga specifieke "digitale catalogus"
- Gebruikersgericht met vlotte selectiemogelijkheid
- Beschikbaar in meerdere talen

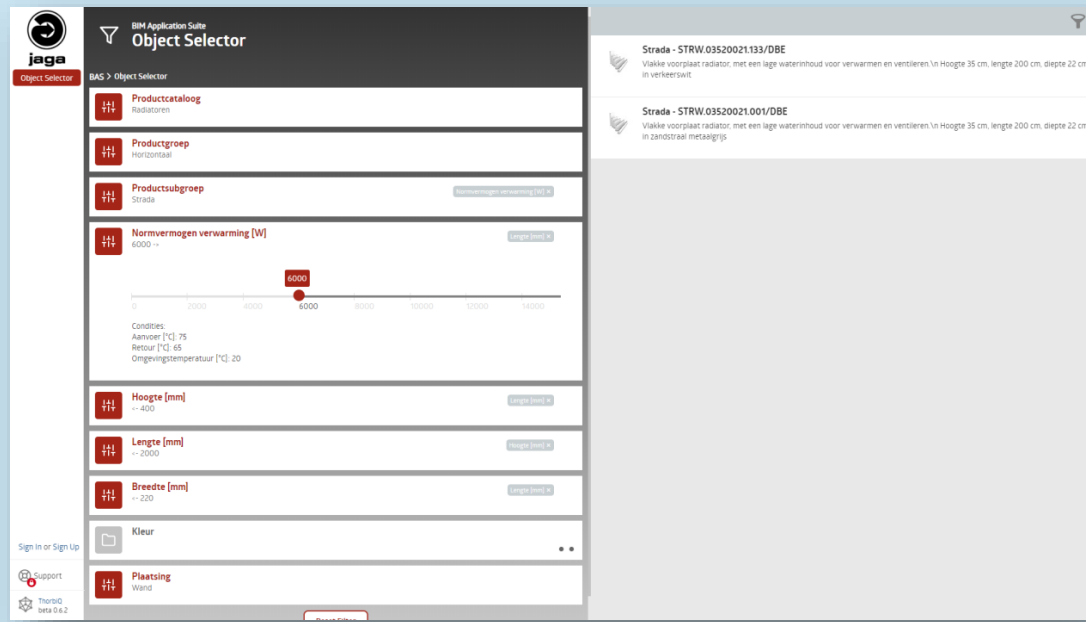
The screenshot displays the 'Object Selector' interface of the Jaga BIM Application Suite. The left sidebar contains a navigation menu with the following items: 'Productcatalogoog Radiatoren', 'Productgroep Horizontaal', 'Productsubgroep Strada', 'Normvermogen verwarming [W]' (with a slider set to 6000), 'Hoogte [mm]' (set to 400), 'Lengte [mm]' (set to 2000), 'Breedte [mm]' (set to 220), 'Kleur', and 'Plaatsing Wand'. The main content area shows the selected product details for 'Strada - STRW.03520021.133/DBE', including a description: 'Vlakke voorplaat radiator, met een lage waters inhoud voor verwarmen en ventileren. \n Hoogte 35 cm, lengte 200 cm, diepte 22 cm in verkeerswit'. Below this, another entry for 'Strada - STRW.03520021.001/DBE' is visible. The interface includes a 'Sign In or Sign Up' link, a 'Support' icon, and a version number 'ThorbiQ beta 0.6.2'.

<https://jaga.thorbiq.io/>

— Jaga —



Use case Jaga BIM Suite



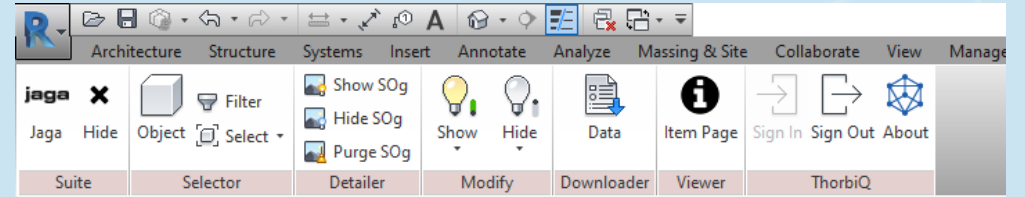
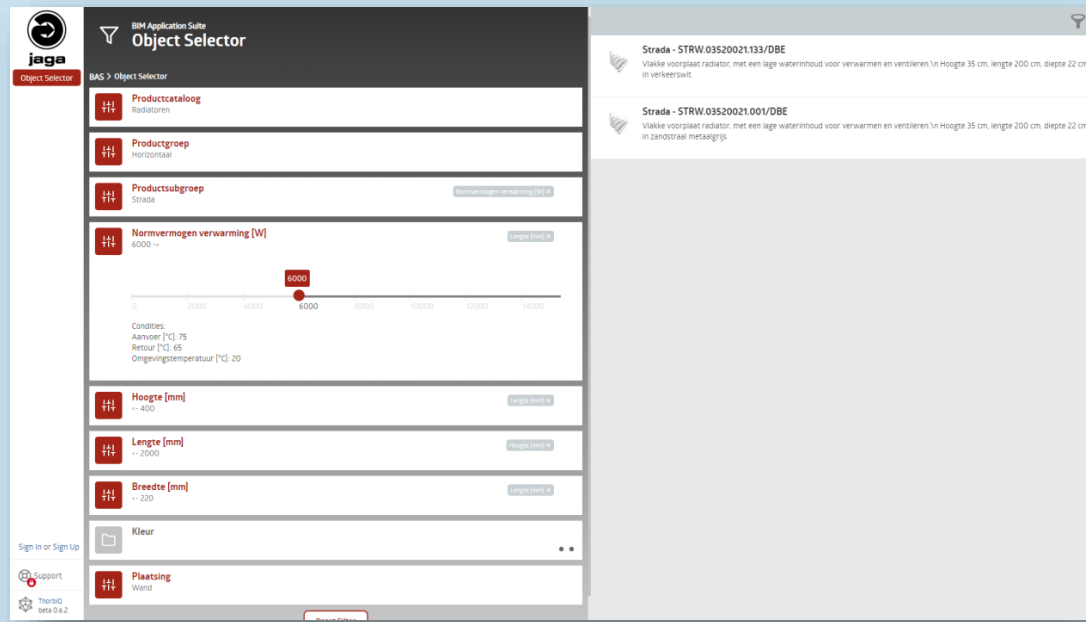
• Een cloud based product selector

- ondersteuning in meerdere talen
- snelle en eenvoudige productselectie
- verschillende documenten zoals afbeeldingen, technische fiches, ...
- BIM content in meerdere formaten (Revit, ARCHICAD, IFC)
- BIM-integratie met op dit moment Autodesk Revit

[watch demo movie selection by requirements](#)



Use case Jaga BIM Suite



- Een plugin for Autodesk Revit
 - Die de gebruikers de mogelijkheid biedt BIM data/content rechtstreeks in een BIM-model in te laden
 - Die de generieke-specifieke workflow ondersteunt
 - Incl. de 'laadt als neutraal' optie
 - Incl. verschillende Level Of Details ("LOD"),
 - Inclusief een download functie, die de gebruikers de mogelijkheid biedt alle relevante productdata uit een BIM-model te genereren

[watch demo movie](#)



— Jaga —



— Jaga —



Key values for construction actors

TIME SAVING

- one stop shop
- directly integrating with your BIM model
- automatic configuration of generic BIM content

SWITCH LEVEL OF DETAIL

- products can be loaded in a neutral or manufacturer specific format
- manufacturers can provide more detailed, specific object geometries

STANDARDISED

- standardised, consistent generic BIM content is being used
- standardized content allows easy stepping up to compatible tools, applications & services

RELIABLE

- data comes from manufacturers directly

EASY

- data sharing with partners
- e.g. with service providers for calculation, rendering, ...
- cfr. API economy

FULL

- missing products can be uploaded by the users themselves



— key values —



Key values for manufacturers

VISIBILITY

- Visibility in a federations supported initiative with already great traction
- Presence on professional platform
- Leverage from the marketing initiatives from ThorbiQ and from the federations

EASY

- Providing data is enough to be able to cover multiple user needs
- ThorbiQ can help in providing data if desired

FUTURE-PROOF

- An initiative providing great insights for future (digital) strategies
- A scalable solution
- An incentive to streamline internal processes

IMPROVED REPUTATION

- User-centric: provide the services users are asking for
- Users are sure to access and use your reliable data, enormously valuable for construction projects

BUSINESS INTELLIGENCE METRICS

- Interesting metrics from the usage by users
- "Who's using what, when, how?"*

INCREASING OPPORTUNITIES

- Connect to construction actors
- Get your products into construction projects
- Get valuable insights for future digital strategy / services
- Be ahead of your competitors



— key values —



Let's build the future of the construction industry together!

You can help us!

- [Let us know which manufacturers you'd like to see on ThorbiQ](#)
 - manufacturers only need to provide data!
- provide us with your valuable feedback
- Follow us on [LinkedIn](#)



— problem —

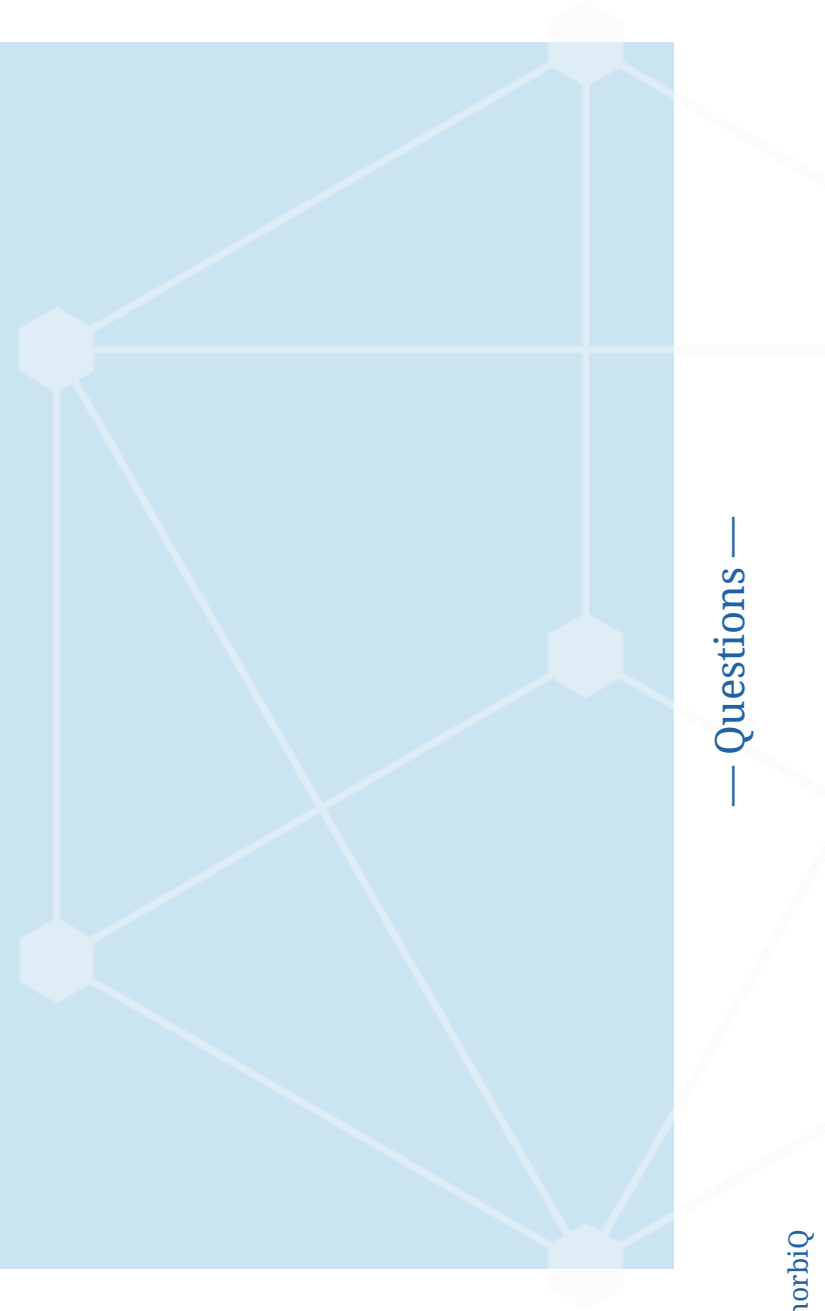
BUILD

3d0



thank you for your time

Questions?



— Questions —